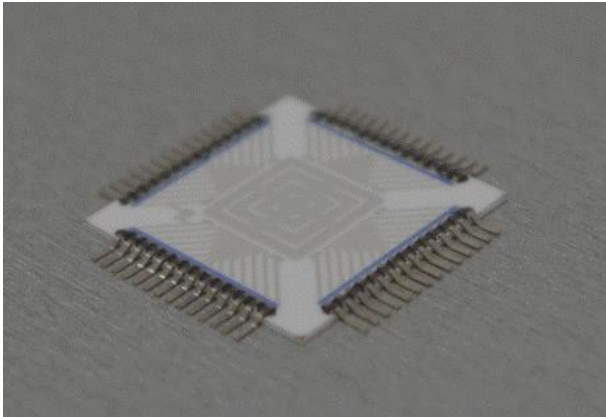


PRODUCT DATASHEET - 004

DESIGNATION: **Chip expander**

TYPE: **CE5**



Substrate

Dimension: 25,4 x 25,4 mm

Material: Al₂O₃

Terminals

Usable terminals: 52 (+2+2)

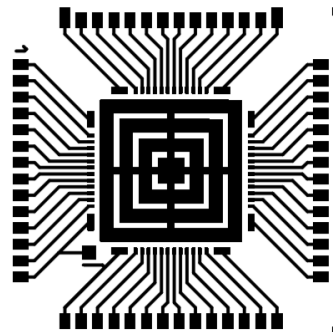
Temp. Measur. : 2

Heating element: 2

DESCRIPTION:

Chip expander (SMD2) is designed to connect experimental chip and structures to a measuring devices and evaluation boards by surface mount technology. These expanders can contain heating resistor layer on the reverse side which allows heating of the expander in the range from ambient temperature up to 120 °C. Temperature measurement is performed by using an open semiconductor PN junction placed on the expander base. The number of usable terminals depends on whether the heating function and temperature measurement is required. We can encapsulate chip by HYSOL epoxy.

TOPOLOGY:



CE5